



**Hutchison Ports Australia**



**Brisbane  
Container Terminals**



**Sydney International  
Container Terminals**

## **Terminal Contacts**

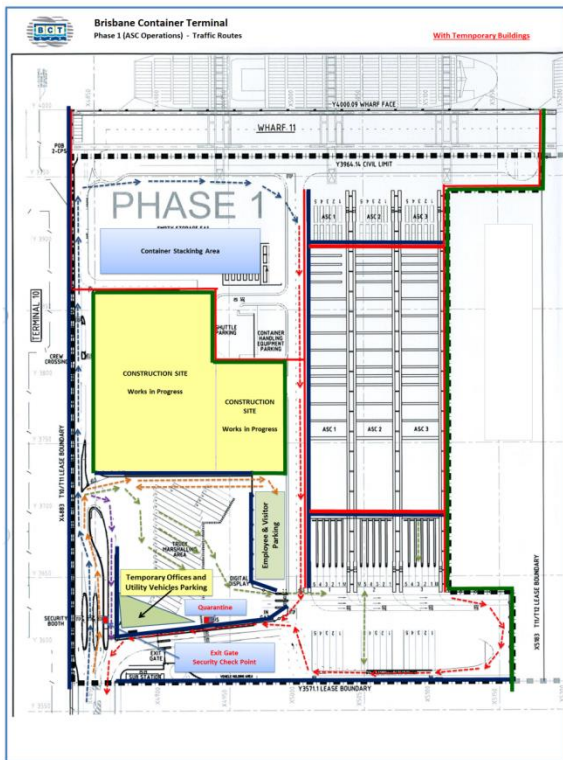
**Yard Manager**

**Phone – (07) 3895 6225**

**Email – [yardmgr.bct@hutchisonports.com.au](mailto:yardmgr.bct@hutchisonports.com.au)**

For Technical and IT related issues only please call  
the **HPA Service Desk: 1800 472 000**

# Brisbane Container Terminal Phase 2 - Traffic Routes



**Brisbane Container Terminals**

**Safety & Security Requirements**

- Speed Limit - 20 KPH
- PPE - Hard Hat / Safety Glasses / Safety Boots / Safety Vest
- Entry subject to valid MSIC and completed induction for BCT via 1 Stop

**Receival & Delivery Procedures**

- Upon arrival at Pre Gate Kiosk, swipe MSIC card and follow screen prompt. If rejected, please leave the facility via the designated "rejection" route.
- If transaction/s accepted, proceed to designated truck handling area.
- If minor exceptions cannot be resolved at pre-gate kiosk, proceed to Drivers Amenities Building to amend, update or cancel specific transaction.
- For Manual stacks - proceed straight ahead towards river. Follow all instructions given by BCT employees.
- For ASC stacks - turn right into truck marshalling area. Wait for truck rego and stack number to appear on the call up board. Thereafter, proceed through the Yard Entry Point gate towards the designated stack. Reverse into any vacant exchange bay and then unlock all twistlocks. When ready, enter the drivers booth at the front of the exchange bay and follow screen prompt.
- Upon completion of transaction/s, driver must lock all twistlocks prior to departing
- Drivers must stop at the Quarantine Inspection station when it is manned

